

# TEAMS MANAGER BRIEFING



WELCOME TO CIRCUIT ZANDVOORT

# DRIVERS BRIEFING

ZANDVOORT · NETHERLANDS 

# FUN CUP

 **Hankook**  
driving emotion



## WELCOME TO CIRCUIT ZANDVOORT



**You can download this  
briefing at the following  
website adress:**

**[https://www.europeanfuncup.be/  
documents/](https://www.europeanfuncup.be/documents/)**





# THANK YOU

*Never Forget* without the marshals you don't get to race!



# **YELLOW FLAG**



## **DANGER**

# **NO OVERTAKING**



**TIMING INFORMATION**  
**LAST VERSION =**  
**FINAL 1**



# PAYING PRACTICE

---

SATURDAY

09.30 => 13.30

ALL TEAMS READY 5 MINUTES IN ADVANCE



# FREE PRACTICE

---

SATURDAY

15.00 => 17.00

ALL TEAMS READY 5 MINUTES IN ADVANCE

DIRECTLY START OF QUALIFYING





# QUALIFYING

---

SATURDAY

17.00 => 18.00

**STARTGRID RACE**

**=**

**DRAWING OF LOT**

**(BASE QUALIFYING)**

# RACE

---

SUNDAY

09.00 => 17.00

ALL TEAMS READY 30 MINUTES IN ADVANCE

**Start Procedure at 08.35**

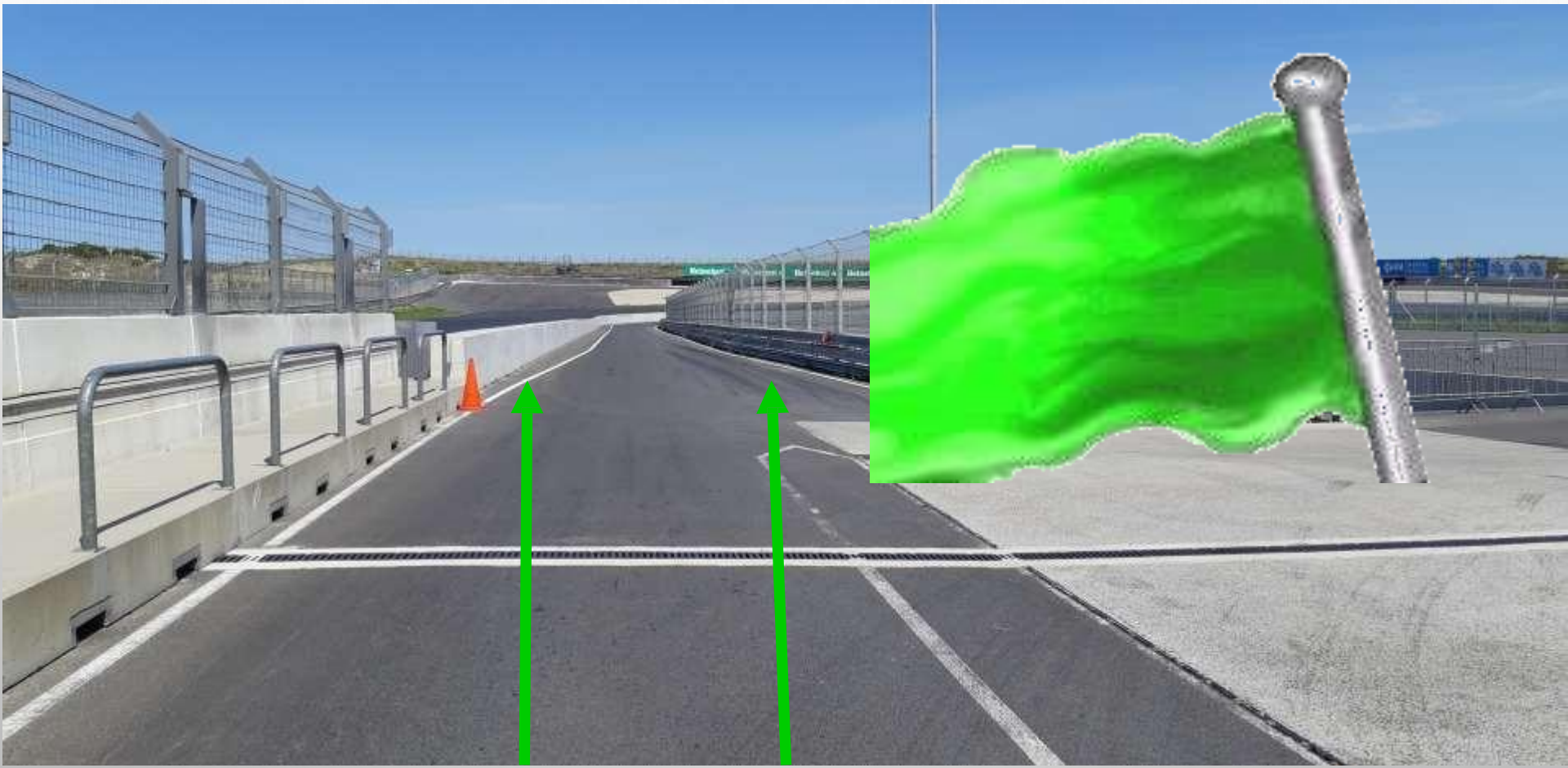
**Pit Open at 08.40**

**Pit Close at 08.45**



# START PROCEDURE

# LEADING CAR ON TRACK







08.40

**GREEN FLAG**





**08.45**

**PITLANE  
CLOSED**



**BOARD**

**5 Min**

**All Cars on  
Grid**



**BOARD**

**5 Min**

**2 Min Before  
end of Working**



**BOARD**

**3 Min**

**END OF WORK  
ON TRACK**





**BOARD**

**1 Min**

**START YOUR  
ENGINE**





**FORMATION LAP**

**T13 - STAY**

**SIDE BY SIDE**

**FORMATION**  
**COMPLETED**



TO GRID



**LEADING  
CAR  
IN**

**FOLLOW THE SPEED OF THE LEADING CAR**

**RESPECT THE  
SPEED OF THE  
LEADING CAR**

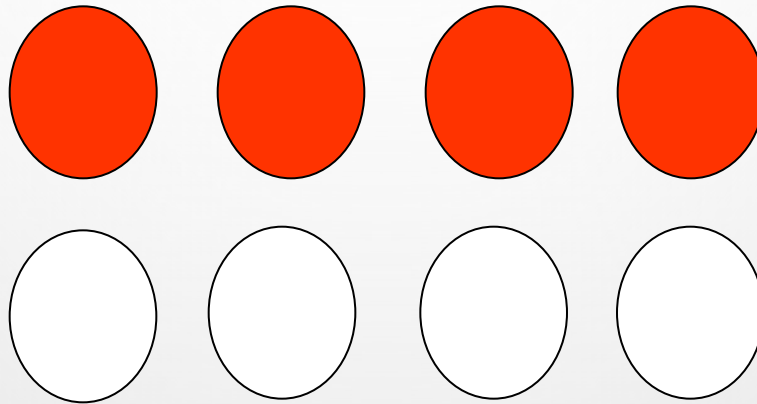
**2 BY 2 FORMATION**



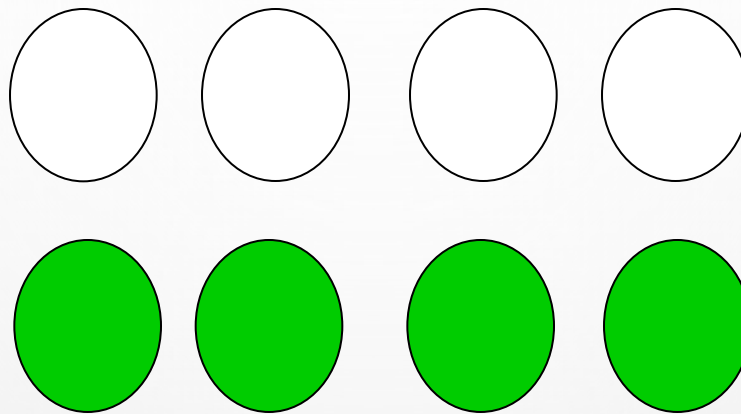


**STARTING LIGHTS**

**ROLLING START**

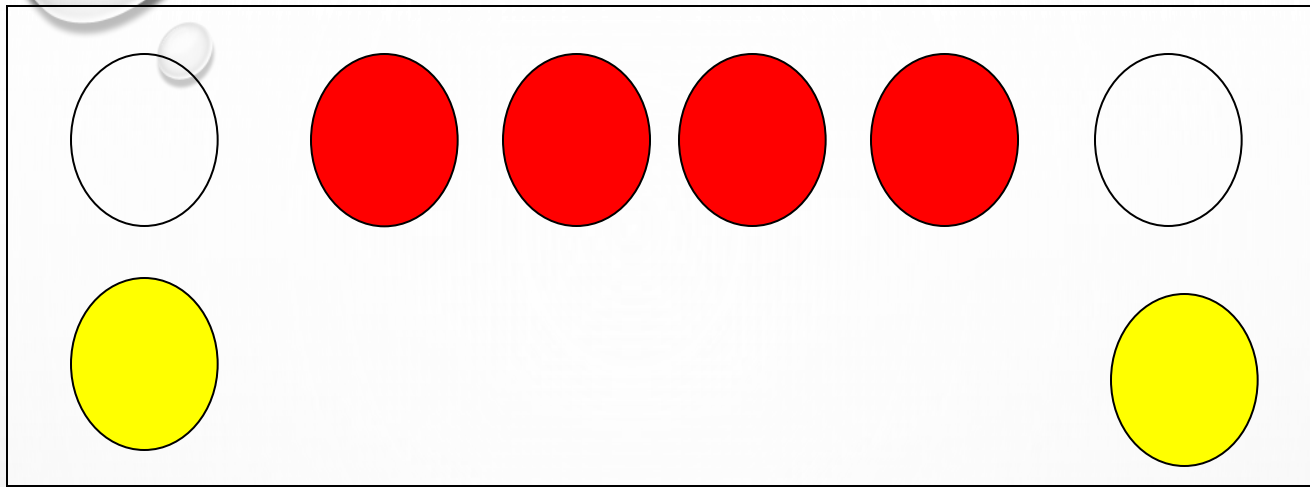


**RED LIGHT**



**GREEN LIGHT**

**START**



**FLASHING YELLOW LIGHT**

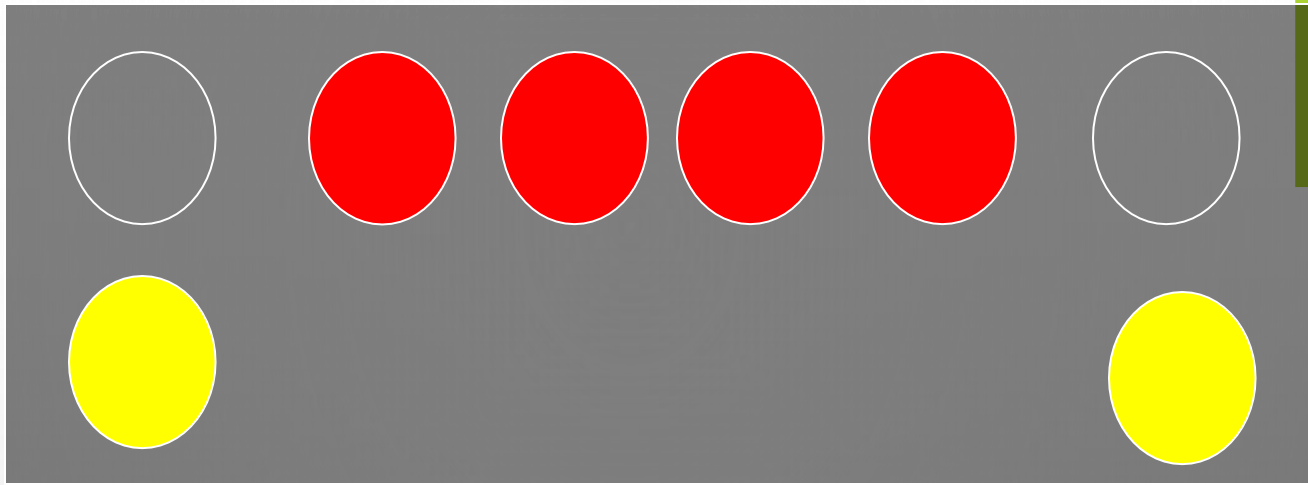
**START DELAYED OR  
EXTRA FORMATION LAP**

**NO OVERTAKING BEFORE  
THE START LINE**



**GREEN LIGHT => START**

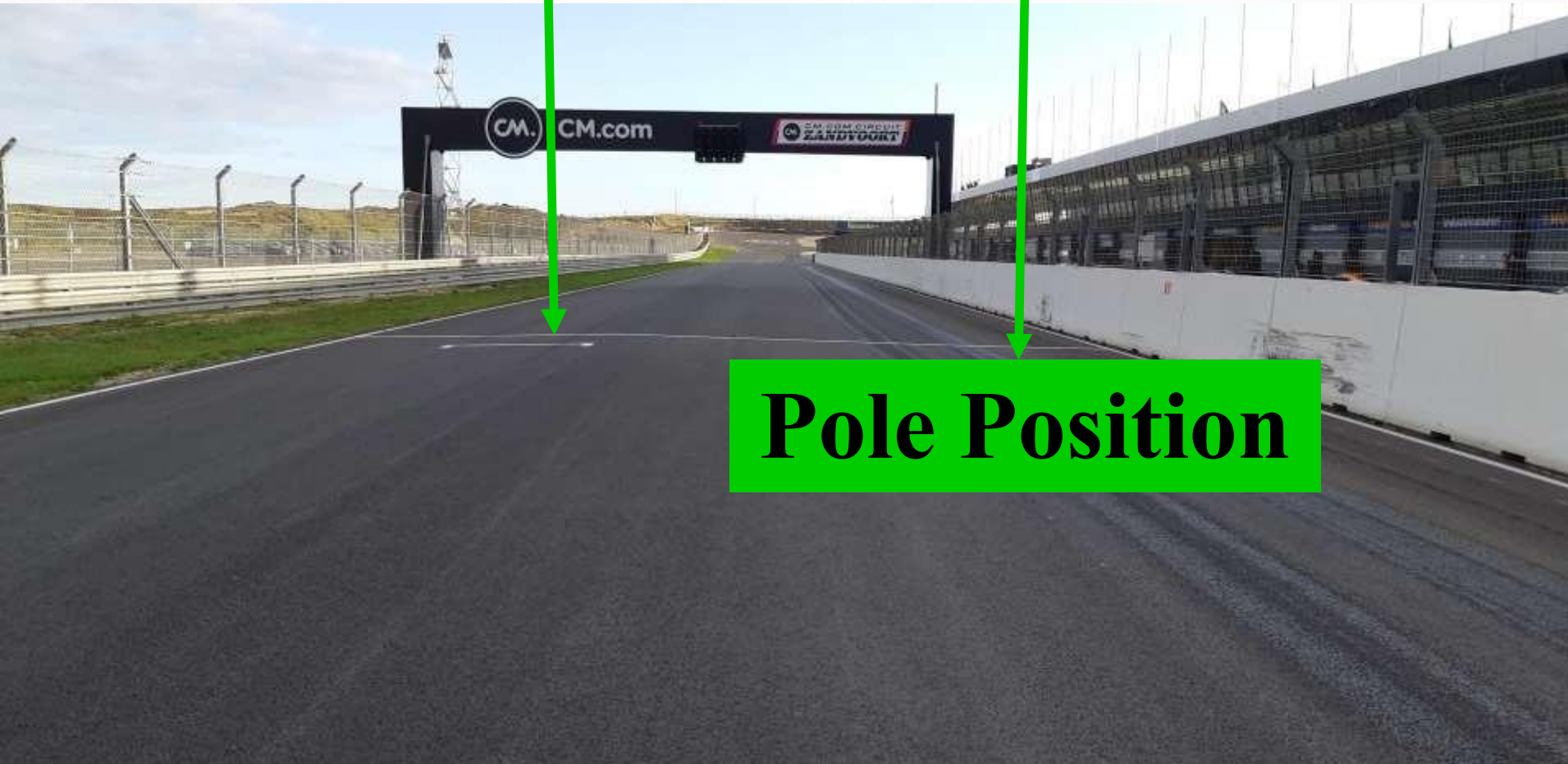




**YELLOW FLASHING  
LIGHT**

**START DELAYED OR  
EXTRA FORMATION LAP**

# START LINE



## Pole Position



**FUN CUP**



# **RACE AND SAFETY INFORMATION**

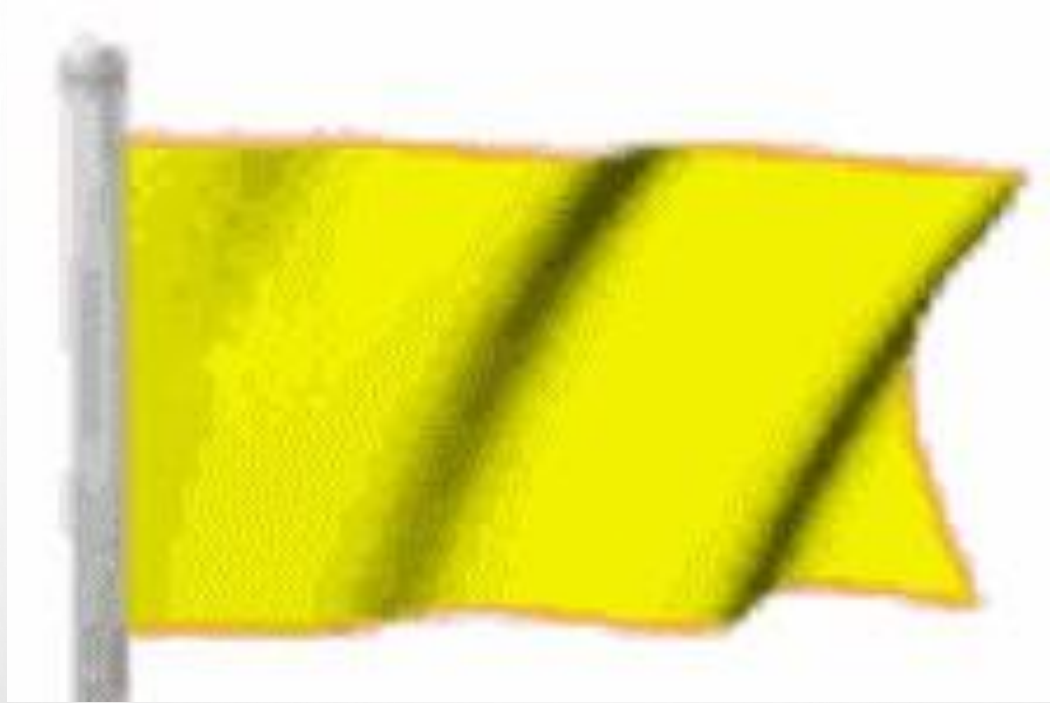
## **Web Result**

**<https://results.ris-timing.be/funbe/benelux/2025/index.htm>**

# STOP & GO AREA

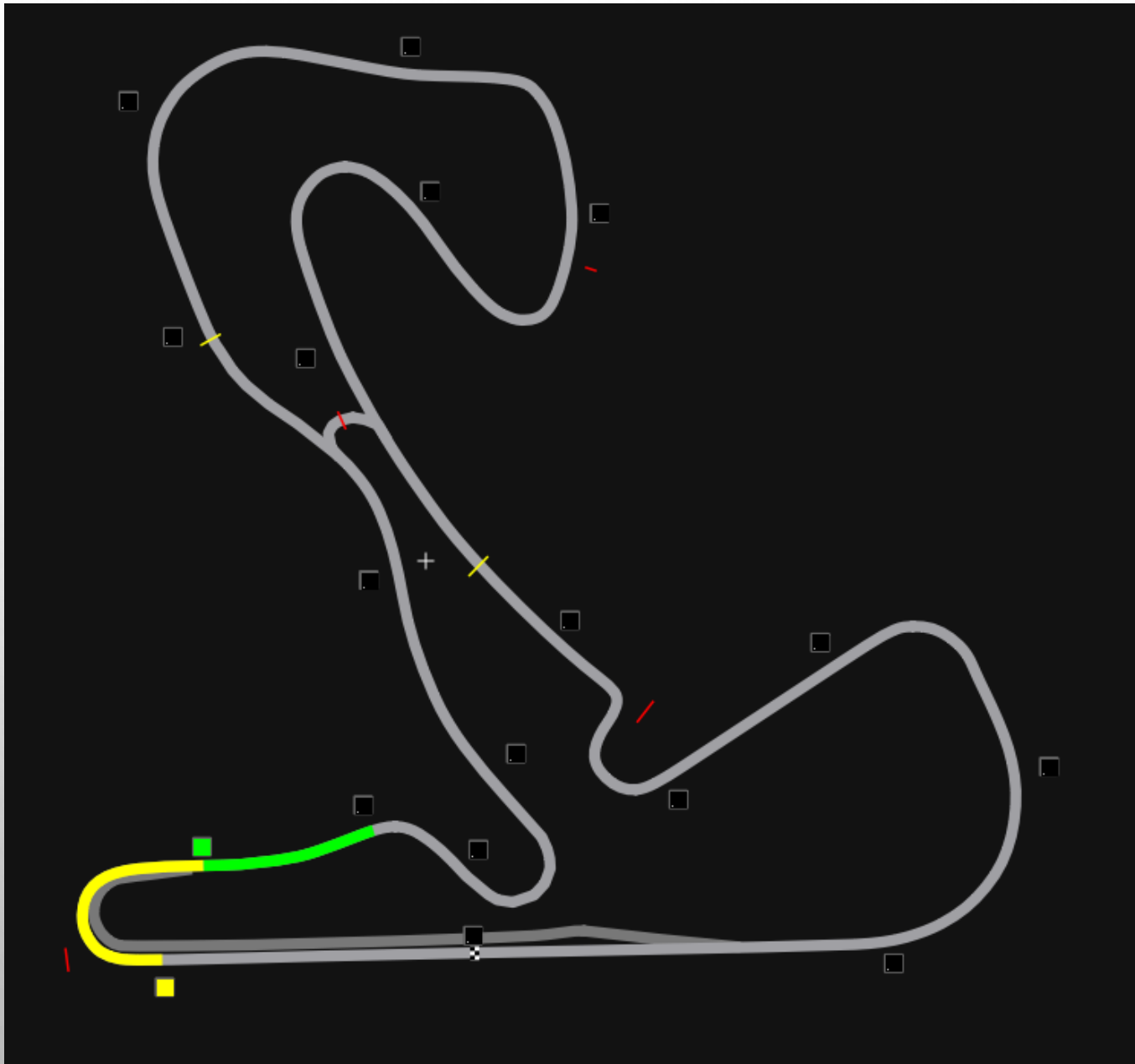






# **INCIDENT TURN 1**

# VIEW TRACKING



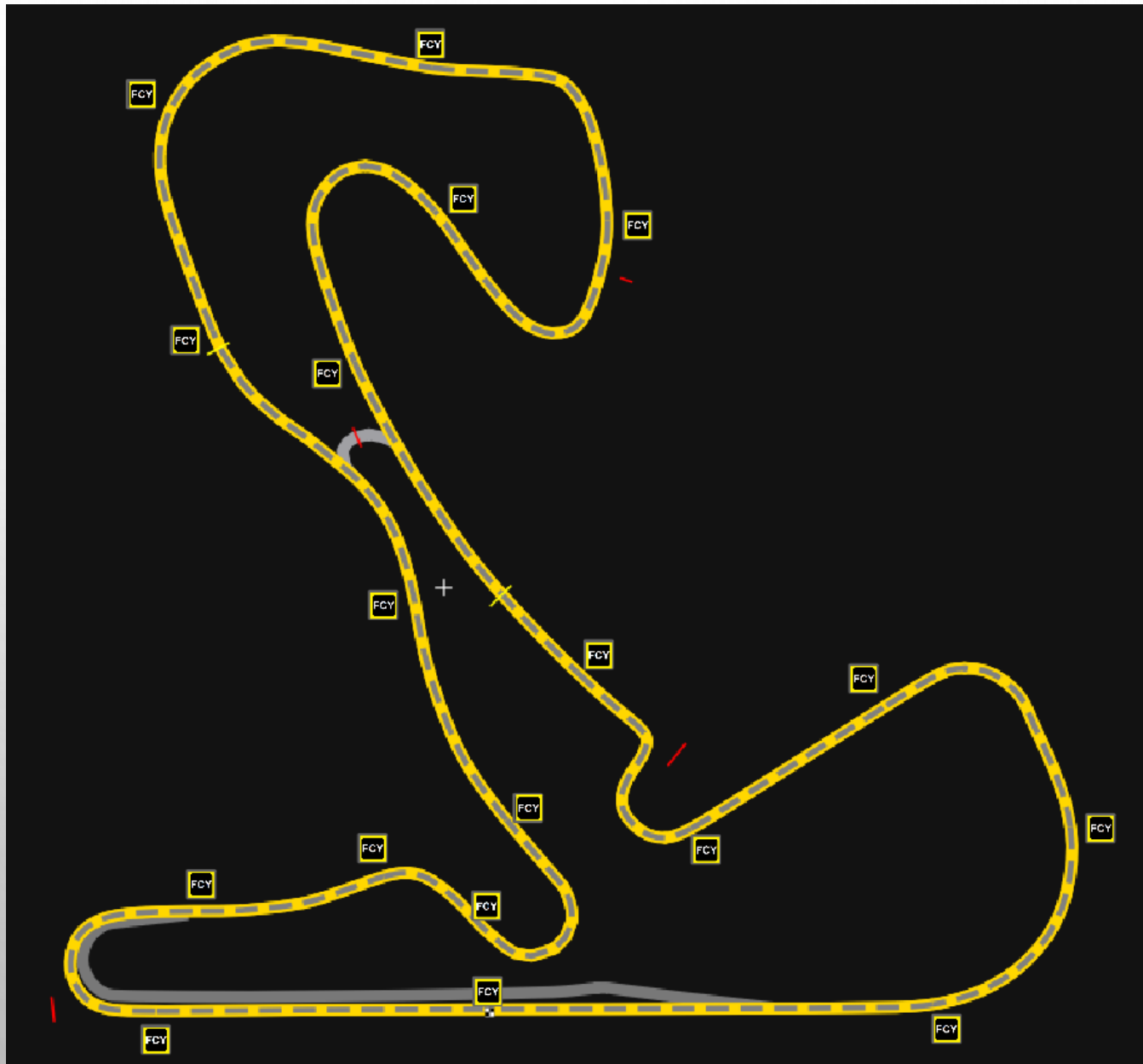




**FULL  
COURSE  
YELLOW**

**FCY  
PROCEDURE**

# VIEW TRACKING





**START  
OF  
COUNTDOWN  
5,4,3,2,1,0**





**AFTER  
INTERVENTION**

**TRACK CLEAR  
Imminent Restart**



**START  
OF  
COUNTDOWN  
5,4,3,2,1,0**

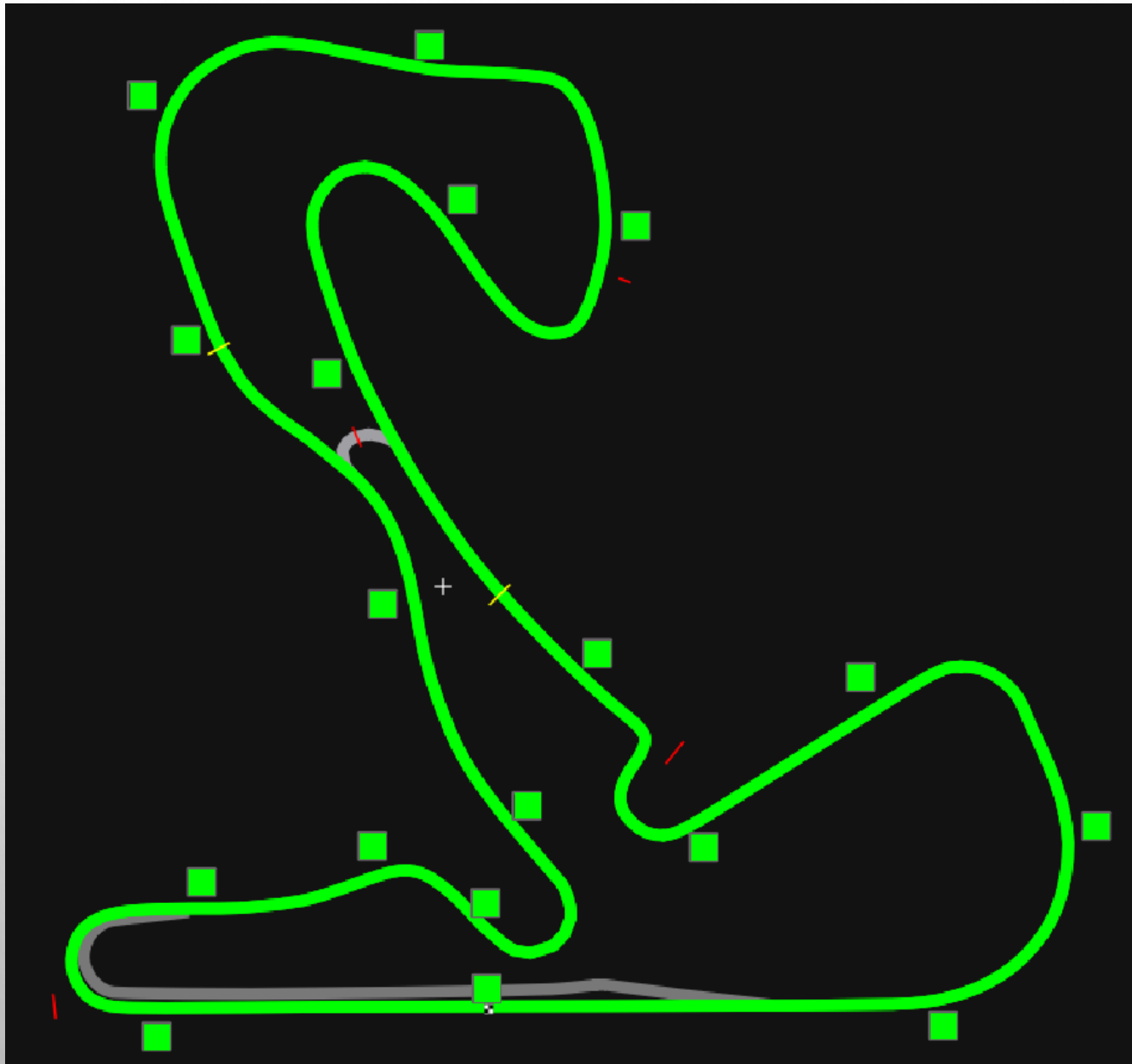
**FULL  
COURSE  
GREEN**

**ALL SECTORS**

**GREEN**



# VIEW TRACKING





# **NO RESPECT THIS PROCEDURE**

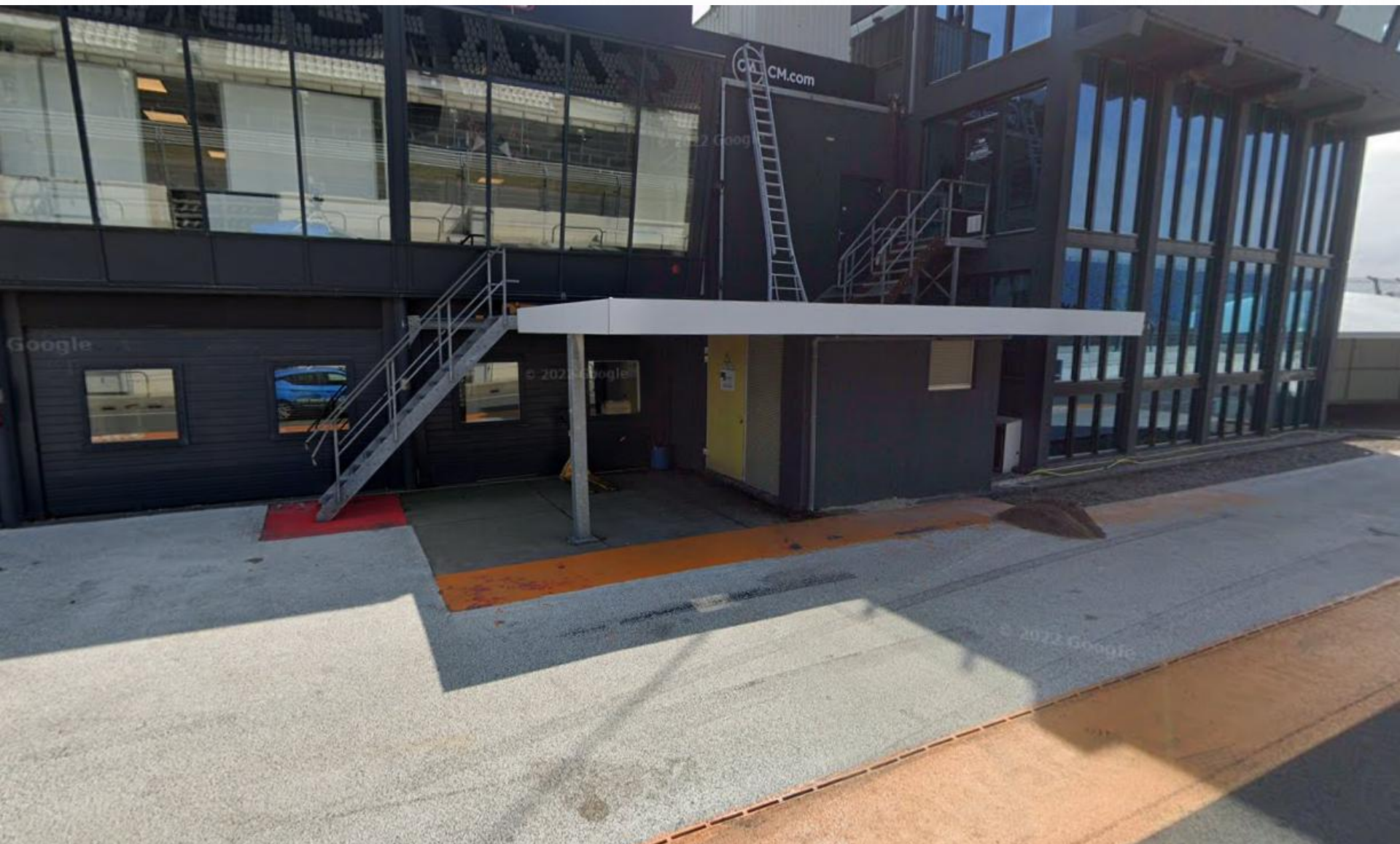
**=**

**1 Warning**

**2 – Stop & Go**

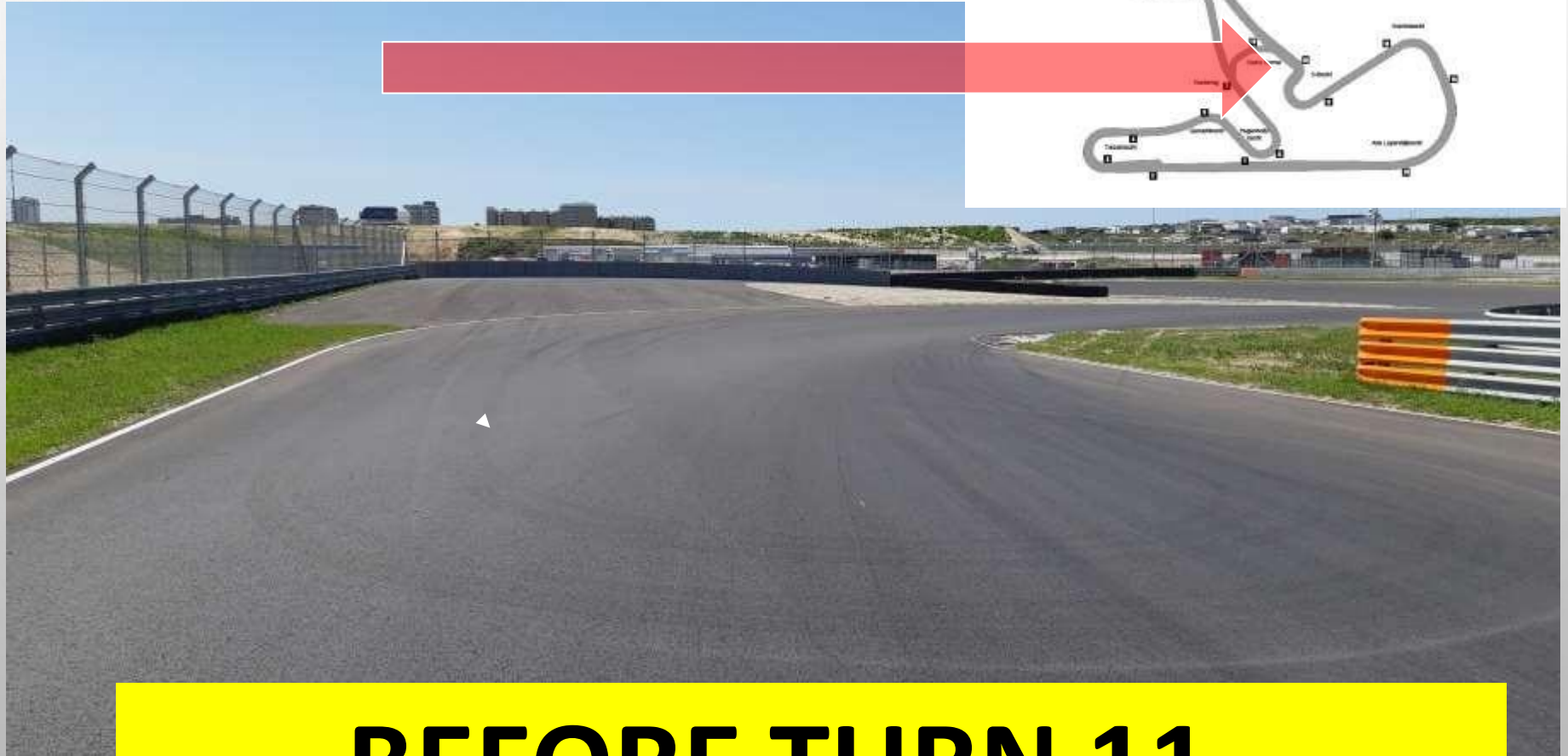
**3 – 1 Lap Penalty**

**4 .... – 1 Lap Penalty**



**SAFETY CAR STAND BY POSITION**

**SC LIGHT OFF**



**BEFORE TURN 11**





**RESTART**



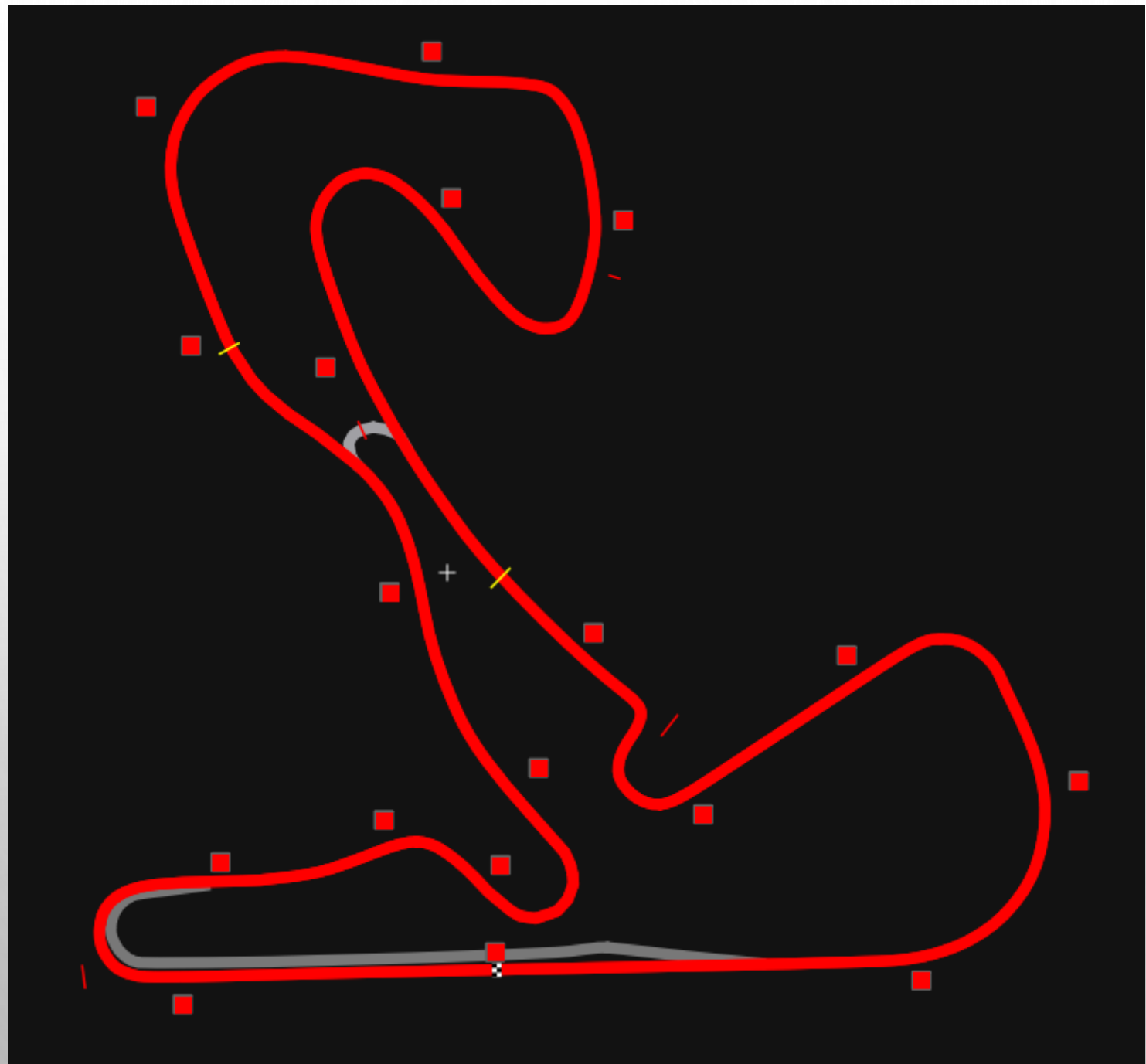
**RED FLAG**

**DANGER**

**IMMEDIATE RACE OR  
QUALIFYING INTERRUPTION**

**SLOWLY AND CAREFULLY**

**BACK TO PIT**





# FUN CUP

An orange silhouette of a car, likely a Volkswagen Beetle, is positioned between the words 'FUN' and 'CUP' in the main title.

 **Hankook**  
driving emotion

## Contact Race Direction

Radio communication & Use channel

453.4625 MHz QT = D023N

**ONLY RECEPTION**



# REFUELING PITLANE INFORMATION

# **REFUELING INFO TEAM APPLICATION**

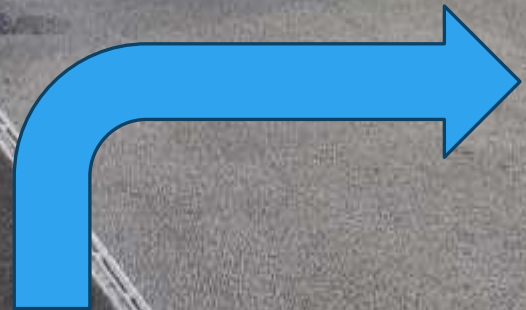
**[HTTPS://DOCS.GOOGLE.COM/SPREADSHEETS/D  
/1HQQGBRYZ6KBBNRLBNRQFWVYRXBTfOMQ  
TE6YTFSG5MzM/EDIT?GID=0#GID=0](https://docs.google.com/spreadsheets/d/1HQQGBRYZ6KBBNRLBNRQFWVYRXBTfOMQTE6YTFSG5MzM/edit?gid=0#gid=0)**

# RACE INFORMATION

## REFUELING PROCEDURE



**PIT EXIT**



**REFUELING**



NOT  
USED

REFUELLING  
AREA

FUEL TANK

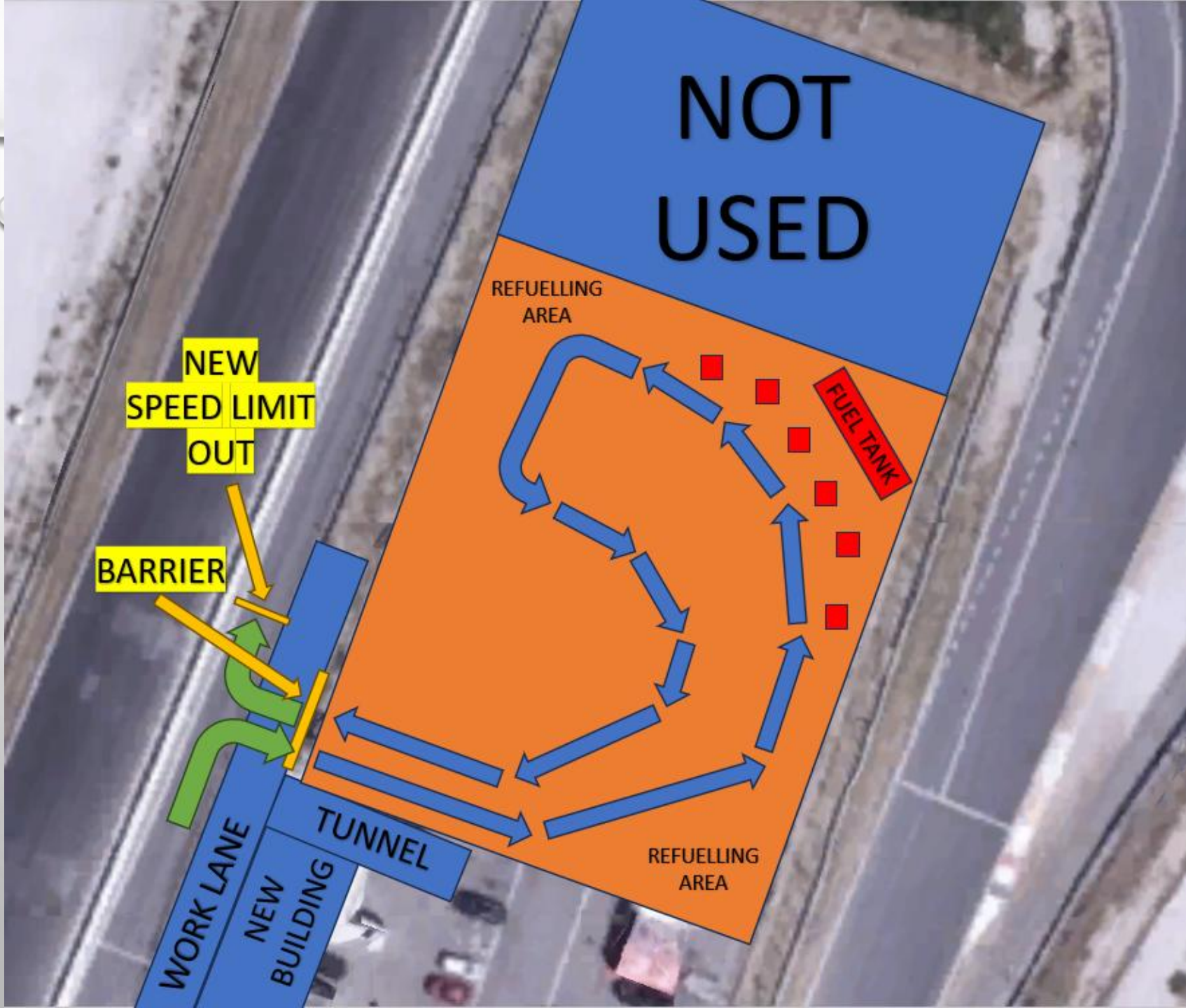
REFUELLING  
AREA

NEW  
SPEED LIMIT  
OUT

BARRIER

WORK LANE  
NEW  
BUILDING

TUNNEL



# IMPORTANT !



## Maximum fuel

# 42 Litres

# FUN CUP

An orange silhouette of a car, likely a Volkswagen Beetle, positioned between the words 'FUN' and 'CUP' in the 'FUN CUP' logo.

 **HANKOOK**  
*driving emotion*

## RACE AND PITLANE INFORMATION



# CAUTION IN PITLANE

NO CREW IN  
FRONT OF A  
STOPPING  
CAR

PROHIBITED!!!!





**PLEASE RESPECT THE PITLANE  
PROCEDURE**

# **SPEED LIMIT IN 50KM/H**



**SPEED LIMIT IN AND  
CHRONO LINE IN !**



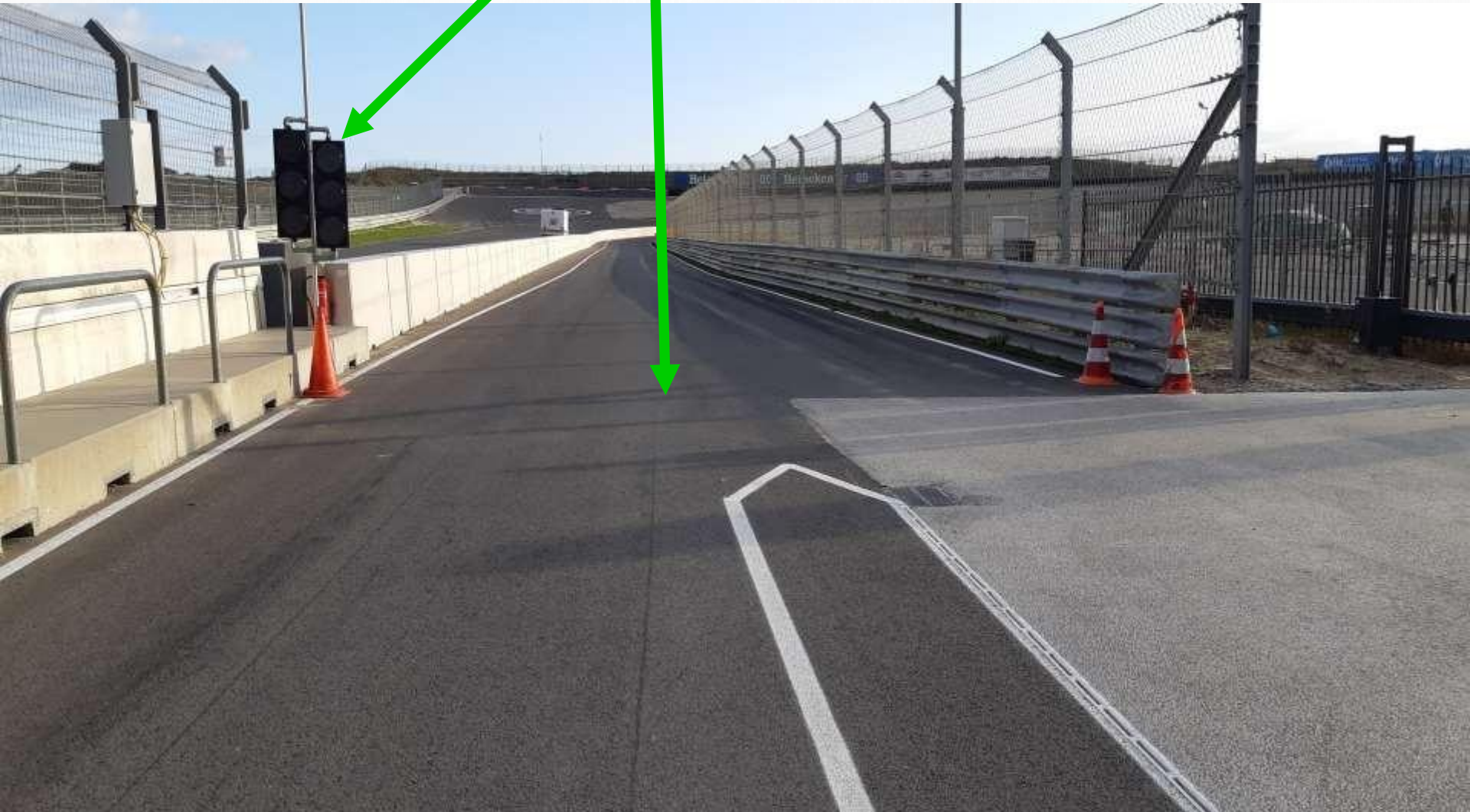
# RADAR CONTROL





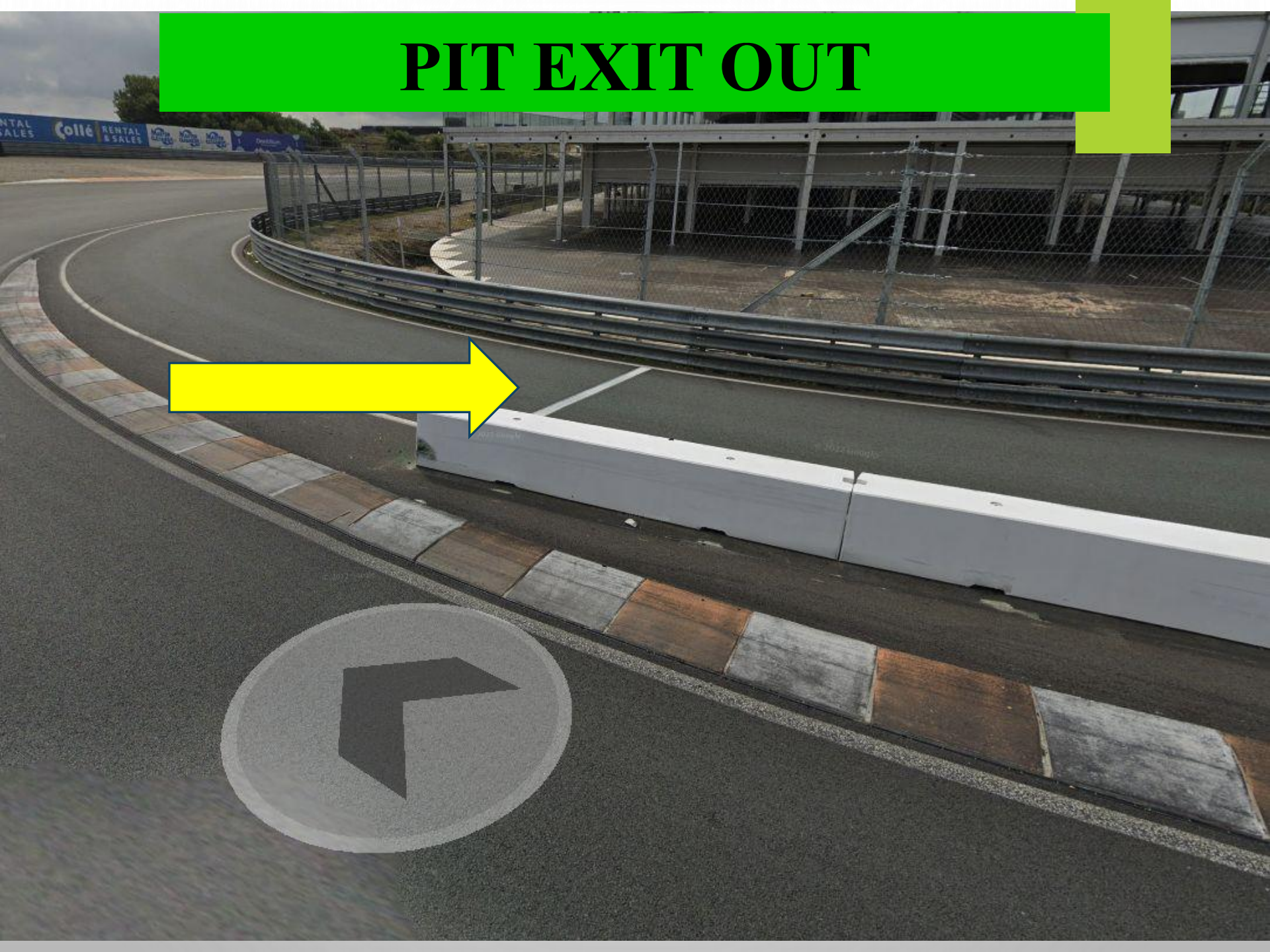
# **Radar, My Laps & Speed Gun CONTROL**

# SPEED LIMIT OUT





# PIT EXIT OUT



# PITLANE EXIT





# PITLANE EXIT KEEP RIGHT



# FUN CUP

An orange silhouette of a car, likely a Volkswagen Beetle, positioned between the words 'FUN' and 'CUP' in the 'FUN CUP' logo.

 **HANKOOK**  
*driving emotion*

## TRACK INFORMATION

ZANDVOORT · NETHERLANDS 

SECTOR 3

START / FINISH

SECTOR 1

SECTOR 2

TRACK DISTANCE

4.259 KM / 2.646 MILES

TURNS

14

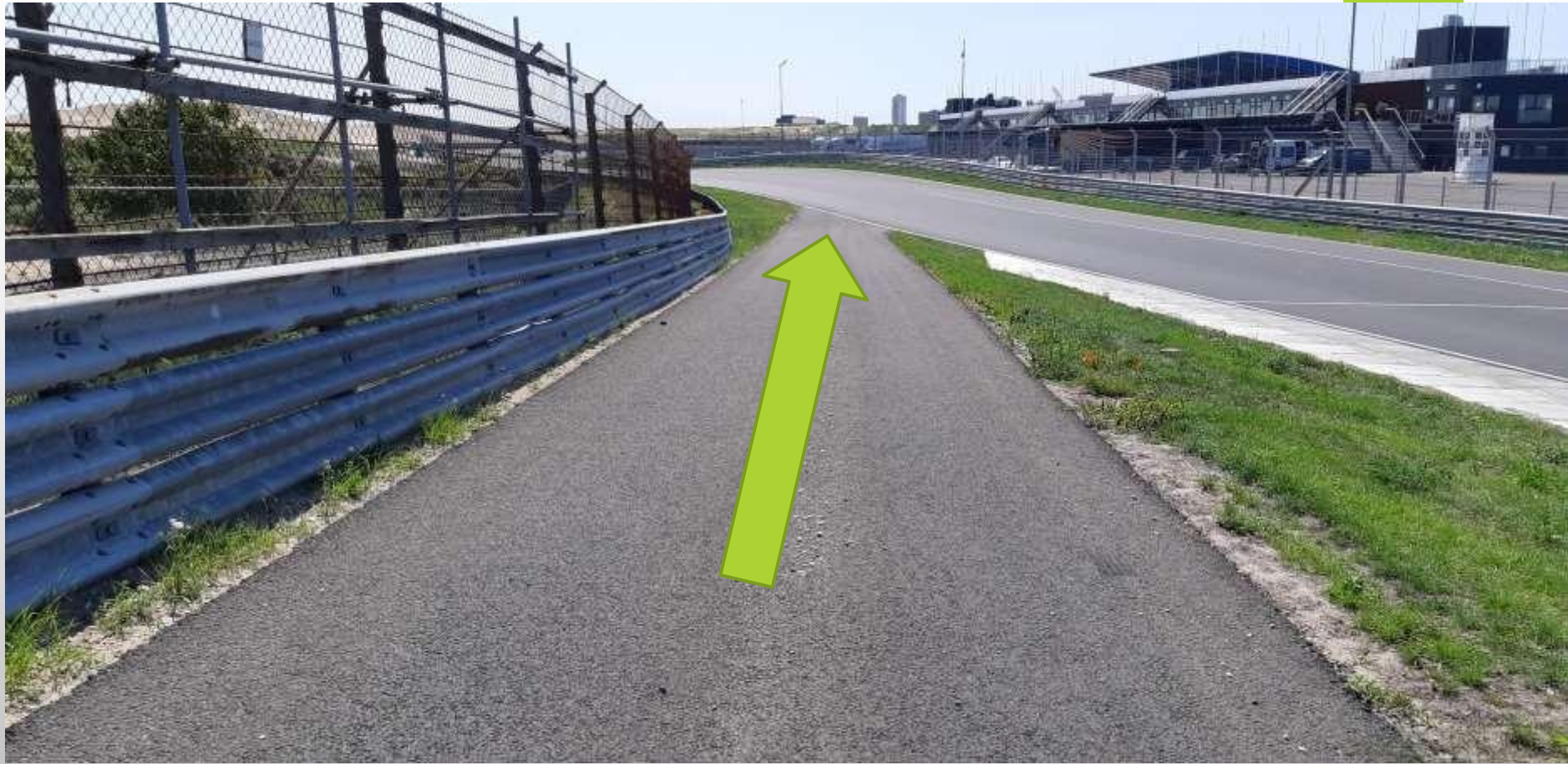






**MORE ATTENTION T1**





**MORE ATTENTION T1**



**MORE ATTENTION T8**



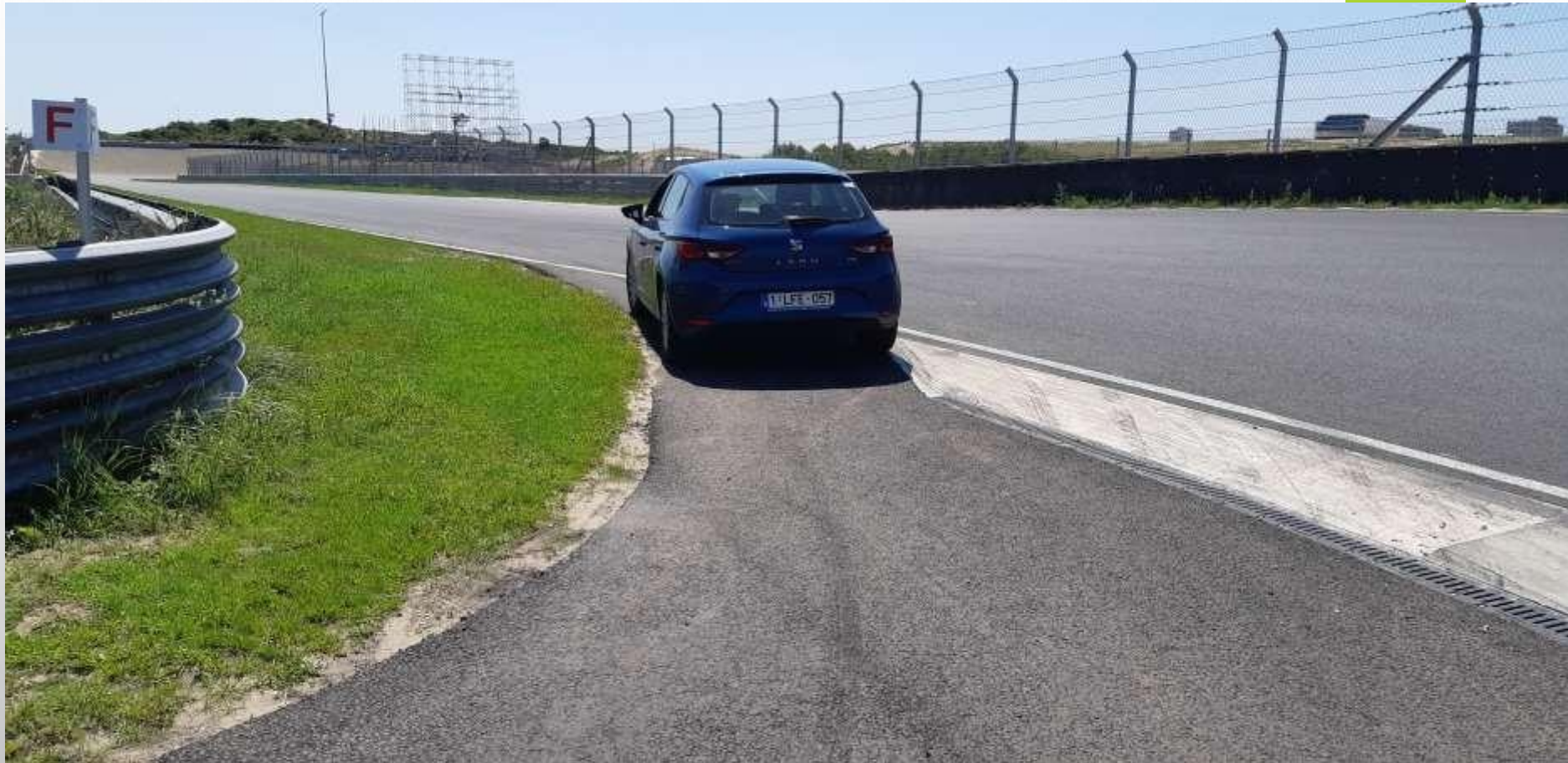


**MORE ATTENTION T11**



**MORE ATTENTION T12**





**MORE ATTENTION T12**



**CHRONO LINE**



# FUN CUP

An orange silhouette of a car, likely a Volkswagen Beetle, positioned between the words 'FUN' and 'CUP' in the 'FUN CUP' logo.

 **HANKOOK**  
*driving emotion*

## RACE INFORMATION

# PITSTOPS SINGLE SEATERS

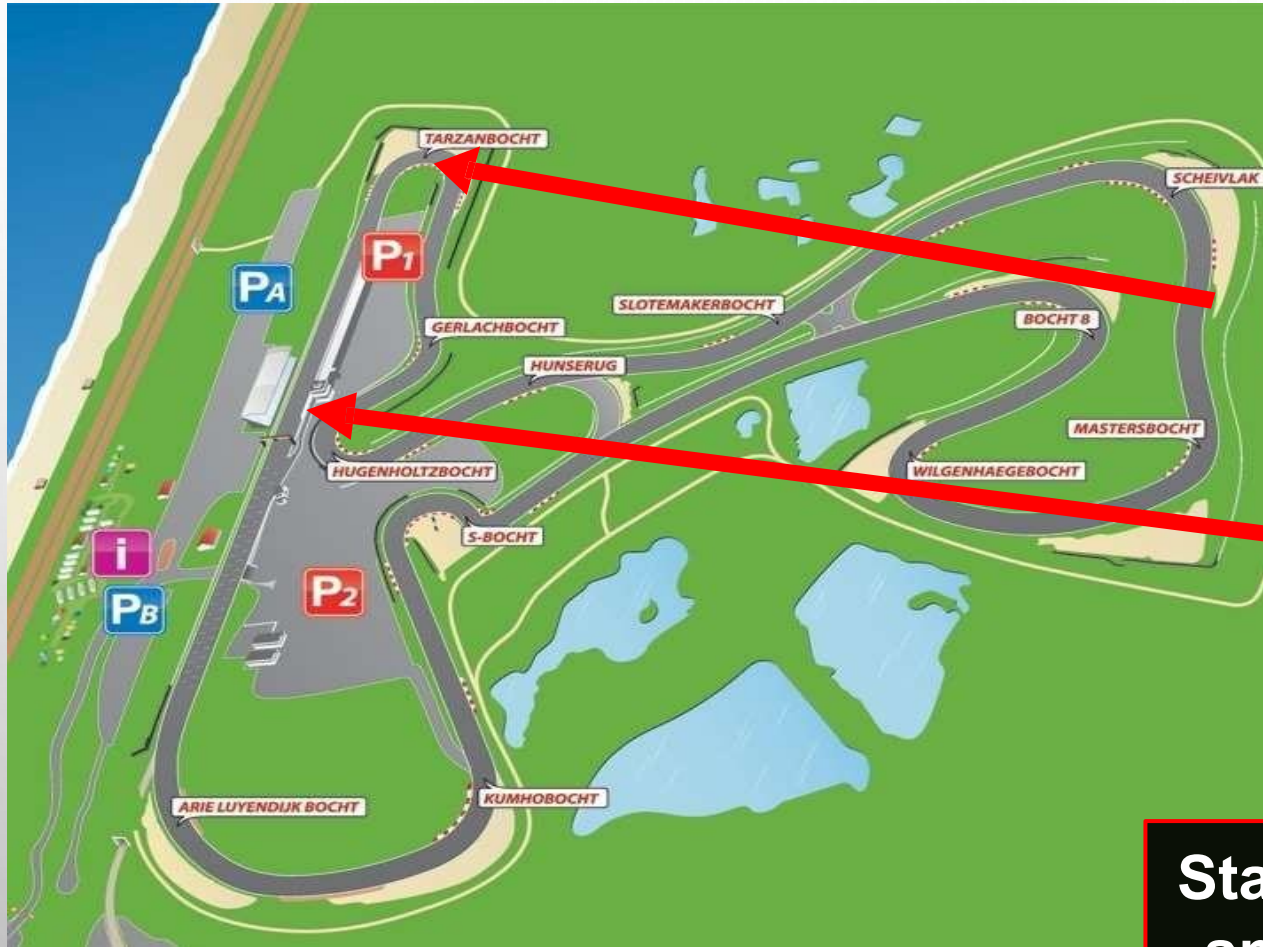
**15 Minutes**

Every 40 Minutes

Open 10 Min Before

Close 10 min After

# PITLANE

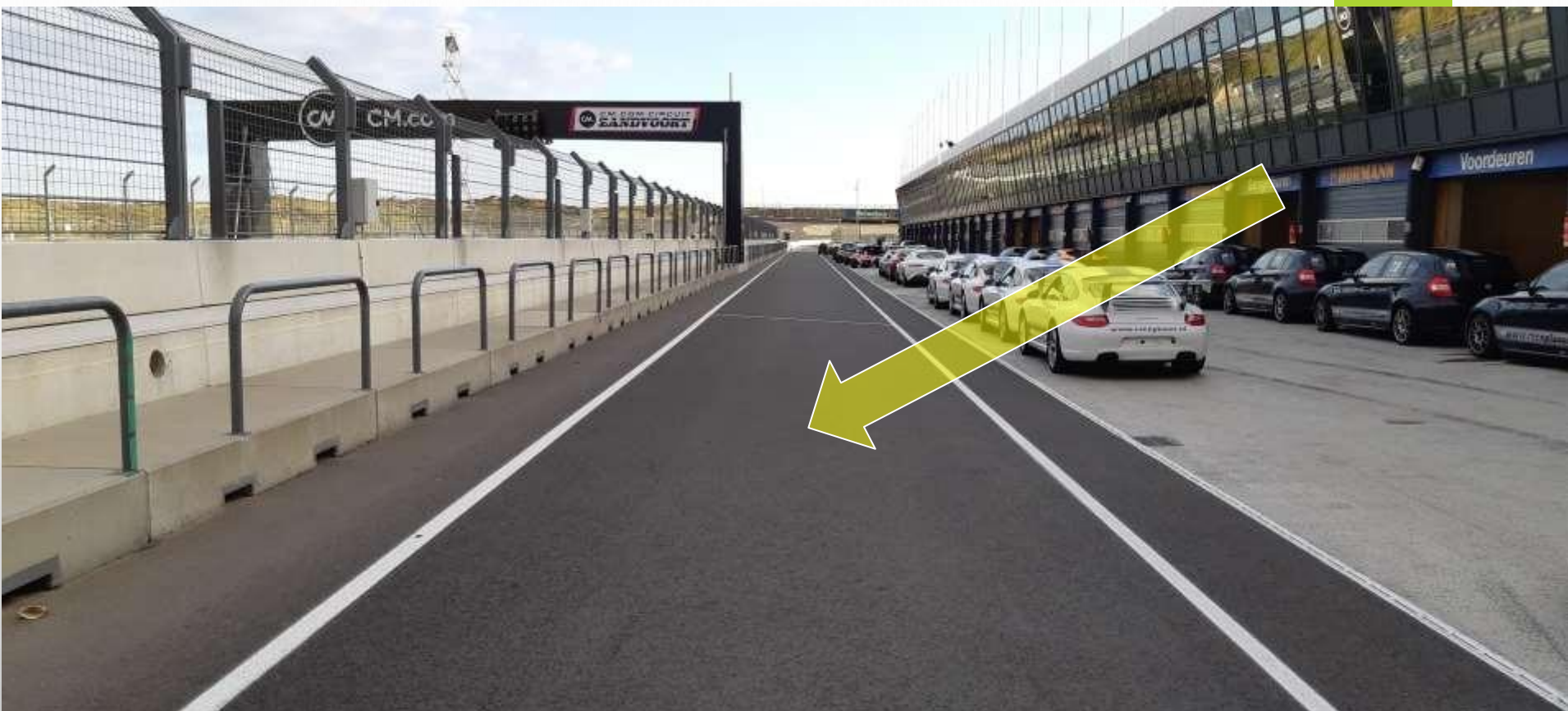


**Pit Exit**

**Pit Entry**

**Stay in a Constant  
speed of 50km/h**

**373 m = Pit In / Pit Out 24 sec**



**YOU HAVE 3 SECONDS INTO THE  
FAST LINE FOR RETAKE THE  
NORMAL SPEED OF 50KM/H**

**PITSTOPS DOUBLE SEATERS**

**15 STOPS**

**2 MINUTES PER STOP**

# PITSTOPS DOUBLE SEATERS

30 SECONDS IF  
NO PASSENGER

And 10 seconds more with a  
TOP GUN DRIVER



# FUN CUP

 **HANKOOK**  
driving emotion

***RACE DIRECTION  
WISHES YOU A  
GREAT WEEKEND  
AT ZANDVOORT***

# FUN CUP

 **HANKOOK**  
*driving emotion*

